



8-day leisure tour for Double Tenth National Day

Kaohsiung | Alishan Taichung | Hsinchu

Double room

USD 1,399/person

surcharge single bed

USD 645/person

Fare for child

(Adult rate for 12 years old and above.)

- 02-11 year child sharing 1TWN with 1 adult fare same as adult.
- 02-11 year child sharing 1TWN 2 adult with extra bed fare 85% as adult fare.
- 02-11 year child sharing room without bed fare 75% as adult fare.
- 00-01 year child tour fare 10% as adult.



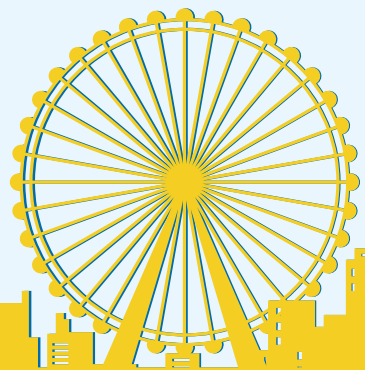
**2025
10/04**

Departure Date



- Day 1-10/04 USA-Taipei Taoyuan International Airport
- Day 2-10/05 Taoyuan International Airport-Taipei
- Day 3-10/06 Taipei-Kaohsiung
- Day 4-10/07 Kaohsiung-Alishan
- Day 5-10/08 Alishan-Sun Moon Lake
- Day 6-10/09 Sun Moon Lake-Taichung
- Day 7-10/10 Taichung-Hsinchu-Taipei
- Day 8-10/11 Taipei-Taoyuan International Airport - United States

(Return to original residence)



Fare Included:

- 6 nights accommodation for 2 persons in 1 room
- 6 hotel breakfasts, 1 lunch, 1 dinner, 1 dinner box (drinks are not included)
- Tickets for sightseeing spots/guides/dedicated car
- Local insurance (Travel Industry Liability Insurance - Accidental Death TWD 2,500,000 + Accidental Medical TWD 100,000)
- HSR Ordinary Depot (Taipei-Zuoying)

Fare Not Included:

- X Hotel baggage gratuities
- X Personal expenses
- X Meals not listed
- X Gratuities for international courtesy drivers and tour guides, suggested US\$8 per person per day.

website-www.sonictour.com
CONTACT NUMBER-323-266-8988

Daily Itinerary

Day 1-10/04 USA-Taipei Taoyuan International Airport

Fly to Taipei Taoyuan International Airport (TPE) on a luxury airplane.

§Accommodation-Airplane Meal

§Meals-Dinner/Self-catering



Day 2-10/05 Taoyuan International Airport-Taipei

Early flight to Taiwan, go to Overseas Compatriot Affairs Commission to apply for Compatriot Card, visit CKS Memorial Hall, National Palace Museum, Dihua Street.



§Accommodation-Caesar Metro Hotel Taipei 4*or the same class

§Meals-Breakfast/Self-catering | Lunch/Self-catering | Dinner/Self-catering

Day 3-10/06 Taipei-Kaohsiung

After breakfast, we will take the high-speed train to Taipei at 09:31 and camp at 11:05 to visit the Buddha Memorial Hall, the Barrier Two Art Zone and the Dagang Bridge.



§Accommodation-Chateau de Chine Hotel Kaohsiung 4* or the same class

§Meals-Breakfast/Hotel Breakfast | Lunch/Self-catering | Dinner/Self-catering

Day 4-10/07 Kaohsiung-Alishan

After breakfast, we will go to Youyi Barzou Cultural Tribe and Alishan National Forest Recreation Area.



§Accommodation-Alishan Hotel (Modern Hall) or the same class

§Meals-Breakfast/Hotel Breakfast | Lunch/Zou Clan Style Meal | Dinner/Hotel Dinner

Day 5-10/08 Alishan-Sun Moon Lake

Early in the morning, go to Zhushan Mountain to watch the sunrise, return to the hotel after breakfast, go to the Nine Tribes Cultural Village, you can take the Sun Moon Lake cable car to have a bird's eye view of Sun Moon Lake, enjoy the aboriginal songs and dances, and experience the amusement facilities.



§Accommodation-Hotel Del Lago (Mountain View Room) 4* or the same class
§Meals-Breakfast/Hotel Breakfast | Lunch/Self-catering | Dinner/Self-catering

Day 6-10/09 Sun Moon Lake-Taichung

Watch the sunrise, return to the hotel for breakfast and depart at 11:00 a.m., visit Hsiangshan Visitor Center, then go to Kuong Hsing Paper Hut in Puli for DIY art folding fan (ready-made handmade paper + printing), drive to Taichung to visit Fenqihu Old Street, and then go to Taichung to attend the Double Ten National Day Gala.



§Accommodation-The Place Taichung 4* or the same class
§Breakfast/Hotel Breakfast | Lunch/Self-catering | Dinner/Western Style Dinner Box

Day 7-10/10 Taichung-Hsinchu-Taipei

After breakfast, we will visit Rainbow Family Village, Beipu Old Street to experience DIY tea-beating, and Weijia Persimmon Cake Educational Farm, and then return to Taipei.



§Accommodation-Caesar Metro Hotel Taipei 4* or the same class
§Meals-Breakfast/Hotel Breakfast | Lunch/Self-catering | Dinner/Self-catering

Day 8-10/11 Taipei-Taoyuan International Airport - United States (Return to original residence)

Free time or transfer to the airport according to the flight time, to start your next trip or return to your home.
p.s. Transfer to the airport for your onward flight.

§Meals-Breakfast/Hotel Breakfast



Cancellation Policy

Air Fare:

Airfare cancellation policies are determined by the individual airlines. Upon booking your air ticket, you agree to follow the terms and conditions associated with your ticket with the respective airline. Sonic Travel and Tour will assist in any communications with the airlines; however final refund determinations will be up to the airlines. Changes or services may incur a name change fee, date change fee, seat assignment fee and/or service charge fee which are non-refundable. Sonic Travel and Tour highly recommends travel insurance.

機票價格：

機票取消政策由各航空公司決定。預訂機票後，您同意遵守相應航空公司與您的機票相關的條款和條件。Sonic Travel and Tour 將協助與航空公司進行任何溝通；但最終退款決定將由航空公司決定。變更或服務可能會產生姓名變更費、日期變更費、座位分配費和/或服務費，且不可退還。Sonic Travel and Tour 強烈推薦旅遊保險。

Cruise Fare:

Cruise fare cancellation policies are determined by the individual cruise lines. Upon booking your cruise, please review your booking confirmation. It will contain information regarding the terms and conditions associated with your cruise. Sonic Travel and Tour will assist in any communications; however, the final refund determination will be up to the cruise line. Sonic Travel and Tour highly recommends travel insurance.

遊輪票價：

郵輪票價取消政策由各郵輪公司決定。預訂遊輪後，請查看您的預訂確認資訊。它將包含與您的遊輪相關的條款和條件的資訊。Sonic Travel and Tour 將協助任何溝通；但最終退款決定將由郵輪公司決定。Sonic Travel and Tour 強烈推薦旅遊保險。

Tour Fares:

The following tour cancellation charges will apply for all cancellations received based on days prior to departure.

- \$500/\$1000 per person Deposit is due at time of booking
- Deposits are due 160 to 120 Days before Departure
- Final Payment is due 75 Days before Departure

Cancellation Schedule

- 120 Days or more prior to departure: \$500 per person penalty
- 119 Days to 90 prior to departure: \$1,000 per person penalty
- 89 to 75 Days prior to departure: 25% of full tour fare penalty
- 74 Days to 30 days prior to departure: 50% of full tour fare penalty
- 29 days or less prior to departure: 100% of full tour fare penalty

There will be no partial credit for any portion of the tour missed or elected not to participate.

If there is a force majeure disaster, the cancellation policy will be handled on a case by case basis

Group Air Tickets are non-refundable, non-changeable.

旅遊票價：

以下旅遊取消費用將適用於出發前幾天收到的所有取消預訂。

- 每人團費少於\$3000需支付 500 美元/團費多餘\$3000需支付1000 美元, 預訂時需支付押金
- 出發前 160 至 120 天支付押金
- 最後付款需於出發前 75 天支付

Tel: 888-266-8988

Fax: 323-266-3380

www.Sonictour.com

9662 Las Tunas Dr, Temple City, CA 91780



LAX CST#2057190-40

Cancellation Policy

取消時間表：

- 出發前 120 天或以上：每人 500 美元罰款
- 出發前 119 天至 90 天：每人 1,000 美元罰款
- 出發前 89 至 75 天：全額旅遊費用的 25% 罰款
- 出發前 74 天至 30 天：全額旅遊費用的 50% 罰款
- 出發前 29 天或更短時間：全額旅遊費用的 100% 罰款

錯過或選擇不參加旅行的任何部分都不會獲得部分積分。

如有不可抗力災害，取消政策將依具體情況處理。

團體機票不可退款、不可更改。

Group Policies:

Group Price listed on Sonic Travel and Tour Website is only applicable when the group size reaches 10 people.

For Group size between of 2-6 people, the tour will operate by 1 person driver/guide.

For Groups size of 2 people, meals are not included in the tour fare.

Deposit Requirements:

For Tour Fares of \$3000.00 or higher, a \$1000.00 deposit will be collected.

For Tour Fares less than \$3000.00, a \$500.00 deposit will be collected.

Bonus Credit \$100: Credit for Final Payment made more than 75 days before departure.

(Limit 1 Per Person Per Tour)

Referral Credit \$50: If an existing Sonic Travel and Tour client refers someone to join the same tour, and the referred person is a new Sonic Travel and Tour client, both the referring person and referred person's booking will get a \$50 credit. (Limit 1 Per Person Per Tour)

Sonic Travel and Tour will make the final determination for eligibility of the Bonus Credit or Referral

Credit.

In case of any disputes, the English language version of this Cancellation policy will prevail.

團體政策：

Sonic Travel and Tour 網站上列出的團體價格僅適用於團體人數達到 10 人的情況。

對於 2 至 6 人之間的團體規模，旅遊將由 1 人司機/導遊負責。

對於 2 人的團體，餐費不包含在旅遊費用中。

存款要求：

對於 3000.00 美元或以上的旅遊票價，將收取 1000.00 美元押金。

對於低於 3000.00 美元的旅遊票價，將收取 500.00 美元押金。

獎勵積分 100 美元：出發前 75 天以上支付的最終付款可獲得積分。（每人限購 1 人）

推薦積分 50 美元：如果現有 Sonic Travel and Tour 客戶推薦某人參加同一旅遊，

並且被推薦人是新的 Sonic Travel and Tour 客戶，則推薦人和被推薦人的預訂都將獲得50美元的積分。

（每人限購 1 人）

Sonic Travel and Tour 將最終確定獎勵積分或建議積分的資格。

如有任何爭議，以本取消政策的英文版本為準。

Tel: 888-266-8988

Fax: 323-266-3380

www.Sonictour.com

9662 Las Tunas Dr, Temple City, CA 91780



LAX CST#2057190-40