

SonicTour

LAX CST#2057190-40

Japan Travel

8-Day Tour in Kansai, Japan

関西8日間ツアー

Kyoto, Wakayama, Japan tour

[Classic Itinerary] Kisanjing Temple, Kinkaku-ji temple, Heian Jingu Shrine, Sagano Arashiyama Scenic Spot, Katsura River Watanuki Bridge, Osaka Castle Park

[Celebrities Recommend] Hashidate (one of the Three Scenic Spots of Japan), Igan-cho (Hidden Village Tour)

[Popular Itinerary] Wakayama Sightseeing Train, Kuroshio Market, Chitose Shiki, Sanbanbi Cave

[Local Experience] Picking Strawberry Pears in a Japanese Orchard

DAY1-U.S. Flight to Japan/Osaka

DAY2-Arrival in Japan/Osaka-Kansai Airport

DAY3-Kansai Airport-Wakayama Sightseeing Train Experience-Kisanai Temple-Kuroshio Market-Chidashiki Kiwa-Sandanbi Cave-Fruit Organic Farm

DAY4-Sekiakong-Three Views of Japan-Amanohashidate (cable car ride included)-Kasumatsu Park-Funeya-no-Sato Tribe "Igame Bay" (visit to a hidden village)

DAY5-Osaka-Arashiyama Scenic Area in Kyoto-Torigetsukyo Bridge-Bamboo Grove Trail-Saga Romance Train Classical Train (reserved seats)-Kinkakuji Temple

Day6-Osaka/City Train-Osaka Castle Park (free climb to Tenshokaku)-Osaka's Famous Shopping Center: Shinsaibashi Shopping Street /Dotonbori Gourmet Street

Day7-World Heritage/Uji Heiheien Phoenix Hall-Nara Kagura Park-Todaiji Temple-Osaka City/Umeda Trendy Underground Street

Day8-Kanko Rinku Town Rinku Town Outlet-TRIAL Supermarket-Osaka/Kansai Airport-Return to home country

*Note: Passengers who are exempt from tour fees are still required to pay \$390 (hotel and meals).

Fees includes :

- # Full hotel accommodation with breakfast
- # Transportation, entrance tickets to sightseeing spots and bus tickets (as shown in the itinerary)
- # Driver/tour guide for the whole trip
- # Meals listed in the itinerary

Fees excludes :

- x All kinds of insurance, travel documents, visa fees.
- x Return airfare
- x Driver and guide gratuities (USD12 per day/per person)
- x Additional personal expenses

2025

Daily departures

Group of 6 people

Double room

USD 1,799
per person/

**Cherry Blossom Season
Foliage Season Surcharge**

USD 200
per person/



CONTACT NUMBER / website

323-266-8988 / www.sonictour.com

Itinerary Features

- ★ "Kansai" is the cultural capital of Japan, with the ancient capital of Kyoto full of cultural and historical relics, and Wakayama has been a place of religious pilgrimage for centuries. Just a stone's throw away, you can immerse yourself in the bustling nightlife of Osaka's entertainment district.
- ★ "Nature" Visit the Sanbanban coast, a famous cliff top area, and feel the waves crashing against the shore.
- ★ "Shopping Hotspot" Rinku Town Outlet, TRIAL Supermarket, Shinsaibashi Shopping Street and other trendy shopping spots.
- ★ "Local Cuisine" Visit Kuroshio Market, a giant fish market, for seafood, Japanese Shabu Shabu, Japanese cuisine, Yakiniku (grilled meat), Japanese cuisine, and more!

Daily Itinerary

DAY 1 U.S. Flight to Japan/Osaka

Today, travel from the U.S. to the airport for your luxury flight to Osaka-Kansai Airport

DAY 2

Arrival in Japan/Osaka-Kansai Airport

§ Accommodation-Sun Plus Hotel Kanko or equivalent

§ Meals-Breakfast/Flight Meal | Lunch/Flight Meal
Dinner/Self-Catering



DAY 3 Kansai Airport - Wakayama Sightseeing Train Experience - Kisanai Temple - Kuroshio Market - Chidashiki Kiwa - Sandanbi Cave - Fruit Organic Farm

※**Kisanaiji Temple** : A Buddhist temple built in 770, its bright red color contrasts with the surrounding green mountains. It is said that the Emperor of Japan once visited this temple and it is a highly revered temple in the Wakayama area.

※**Kuroshio Market** : Located on the artificial resort island of Wakayama Yacht City, this bustling seaside fish market offers freshly caught seafood. Enjoy mouth-watering sashimi and fresh seafood grilled over charcoal.



§ Accommodation-Sun Plus Hotel Kanko or equivalent

§ Meal-Breakfast/Hotel Breakfast | Lunch/Kuroshio Market Seafood Cuisine
Dinner/Japanese Shabu Shabu

DAY 4 Sekiakong-Three Views of Japan-Amanohashidate (cable car ride included)-Kasumatsu Park-Funeya-no-Sato Tribe "Igan Bay" (visit to a hidden village)

※**Amanohashidate** : Amanohashidate is a sandbar filled with pine trees and is famous for being one of the Three Views of Japan.

※**Igan Boat House** : The charming village of Igan has unique boat houses along the bay, so stay at a fine inn and take in the old-fashioned flavor of the scenery.



§ Accommodation-Osaka Ebisaka Tokyu or Route Inn Osaka or equivalent

§ Meals-Breakfast/ Hotel Breakfast
Lunch/ Japanese Style Set Meal
Dinner/ Japanese BBQ

DAY 5 Osaka-Arashiyama Scenic Area in Kyoto-Torigetsukyo Bridge-Bamboo Grove Trail-Sagano Romance Train Classical Train (reserved seats)-Kinkaku-ji Temple

※**Watanuki Bridge**: This 155-meter-long bridge spans the Katsura River, which flows gently over the Saga Arashiyama Mountain, and is a famous Kyoto sightseeing spot that offers a beautiful view of the western hills. The graceful bridge is a beautiful example of the essence of Japanese tradition.

※**Arashiyama Bamboo Grove**: One of Kyoto's most iconic landscapes, a walk through this area will leave an indelible impression of the city.

© If the Sagano Romance Train encounters temporary inspections or is fully booked and cannot be reserved, an alternative plan will be to take a river cruise on the Katsura River in Arashiyama.



§ Accommodation-Osaka Ebisaka Tokyu or Route Inn Osaka or equivalent

§ Meals-Breakfast/ Hotel Breakfast | Lunch/ Kyoto Soba Cuisine | Dinner/ Wabi-sabi Cuisine

DAY 6 Osaka/City Train - Osaka Castle Park (free climb to Tenshokaku) - Osaka's Famous Shopping Center: Shinsaibashi Shopping Street / Dotonbori Gourmet Street

※**Osaka Castle Park**: Osaka Castle, Osaka's most famous landmark, was destroyed in a bloody power struggle during the Edo period in 1603. Although the castle dates back to 1583, the castle's landmark, Tenshokaku, was not rebuilt until 1931.

※**Osaka's famous shopping district**: Osaka's most distinctive large-scale shopping street, with a light-permeable roof that makes it a comfortable place to shop without being affected by the weather. The shopping district has a history of 380 years, dating back to the Edo period.



§ Accommodation-Osaka Ebisaka Tokyu or Route Inn Osaka or equivalent

§ Meals-Breakfast/ Hotel Breakfast | Lunch/ Self-catering | Dinner/ Self-catering

DAY 7 World Heritage/Uji Heiheiin Phoenix Hall-Nara Kagura Park-Todaiji Temple-Osaka City/Umeda Trendy Underground Street

※**Uji Heikein Phoenix Hall**: A look at the obverse side of the Japanese 10 yen coin reveals the Heikein's famous Phoenix Hall, or Amitabha Hall. This building is one of the most recognizable Buddhist buildings in Japan, and is the only original building of the Heikein's many buildings to survive to this day.



※**Nara Kanda Park** : Located at the foot of Mount Wakakusa, this vast park is home to friendly deer. Nara's natural surroundings are characterized by temples built in unspoiled forests and lakes where turtles and carp swim freely. Nara's temples and shrines are older and more unique than the restored buildings in Kyoto.

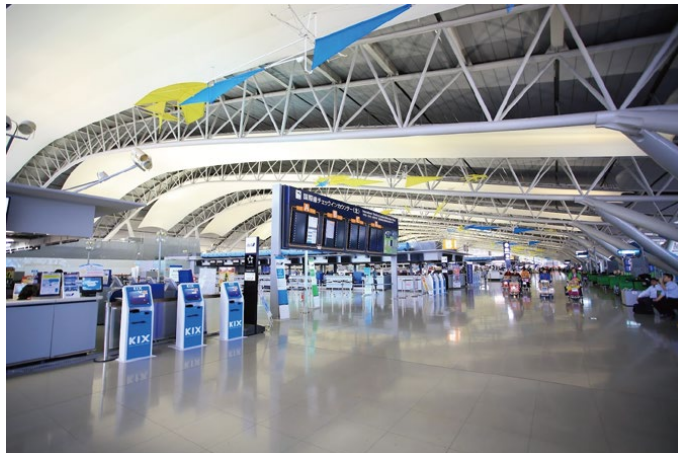
※**Tokodaiji Temple** : Originally built in the Nara period (710-784). This temple, along with other important cultural and historical artifacts in the city, is designated as a cultural property of the ancient capital of Nara under the UNESCO World Heritage Convention.



§ Accommodation-Sun Plus Hotel Kanko or equivalent

§ Meals-Breakfast/ Hotel Breakfast | Lunch/ Daiwa Cuisine | Dinner/ Self-catering

DAY 8 Kanko Rinku Town Outlet-TRIAL Supermarket-Osaka/Kansai Airport-Return to home country



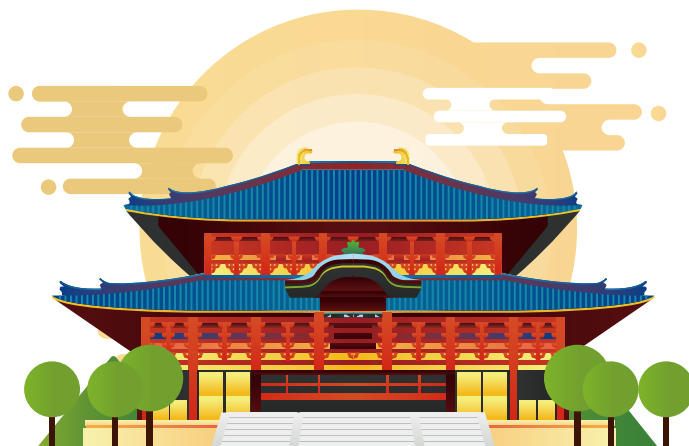
§ Meals-Breakfast/ Hotel Breakfast | Lunch/ Self-catering

Additional Optional Items

- *Upgraded cuisine and activities
- *Emperor's Crab Feast or Wagyu Beef Cuisine, etc.
- *Kyoto Maiko Kabuki Performance
- *Kimono or wagashi making experience

Please contact our service staff

※The above itinerary is for reference only.
Meal ingredients may be adjusted according to the season, and all arrangements are subject to local conditions.



Cancellation Policy

Air Fare:

Airfare cancellation policies are determined by the individual airlines. Upon booking your air ticket, you agree to follow the terms and conditions associated with your ticket with the respective airline. Sonic Travel and Tour will assist in any communications with the airlines; however final refund determinations will be up to the airlines. Changes or services may incur a name change fee, date change fee, seat assignment fee and/or service charge fee which are non-refundable. Sonic Travel and Tour highly recommends travel insurance.

機票價格：

機票取消政策由各航空公司決定。預訂機票後，您同意遵守相應航空公司與您的機票相關的條款和條件。Sonic Travel and Tour 將協助與航空公司進行任何溝通；但最終退款決定將由航空公司決定。變更或服務可能會產生姓名變更費、日期變更費、座位分配費和/或服務費，且不可退還。Sonic Travel and Tour 強烈推薦旅遊保險。

Cruise Fare:

Cruise fare cancellation policies are determined by the individual cruise lines. Upon booking your cruise, please review your booking confirmation. It will contain information regarding the terms and conditions associated with your cruise. Sonic Travel and Tour will assist in any communications; however, the final refund determination will be up to the cruise line. Sonic Travel and Tour highly recommends travel insurance.

遊輪票價：

郵輪票價取消政策由各郵輪公司決定。預訂遊輪後，請查看您的預訂確認資訊。它將包含與您的遊輪相關的條款和條件的資訊。Sonic Travel and Tour 將協助任何溝通；但最終退款決定將由郵輪公司決定。Sonic Travel and Tour 強烈推薦旅遊保險。

Tour Fares:

The following tour cancellation charges will apply for all cancellations received based on days prior to departure.

- \$500/\$1000 per person Deposit is due at time of booking
- Deposits are due 160 to 120 Days before Departure
- Final Payment is due 75 Days before Departure

Cancellation Schedule

- 120 Days or more prior to departure: \$500 per person penalty
- 119 Days to 90 prior to departure: \$1,000 per person penalty
- 89 to 75 Days prior to departure: 25% of full tour fare penalty
- 74 Days to 30 days prior to departure: 50% of full tour fare penalty
- 29 days or less prior to departure: 100% of full tour fare penalty

There will be no partial credit for any portion of the tour missed or elected not to participate.

If there is a force majeure disaster, the cancellation policy will be handled on a case by case basis

Group Air Tickets are non-refundable, non-changeable.

旅遊票價：

以下旅遊取消費用將適用於出發前幾天收到的所有取消預訂。

- 每人團費少於\$3000需支付 500 美元/團費多餘\$3000需支付1000 美元, 預訂時需支付押金
- 出發前 160 至 120 天支付押金
- 最後付款需於出發前 75 天支付

Tel: 888-266-8988

Fax: 323-266-3380

www.Sonictour.com

9662 Las Tunas Dr, Temple City, CA 91780

Cancellation Policy

取消時間表：

- 出發前 120 天或以上：每人 500 美元罰款
- 出發前 119 天至 90 天：每人 1,000 美元罰款
- 出發前 89 至 75 天：全額旅遊費用的 25% 罰款
- 出發前 74 天至 30 天：全額旅遊費用的 50% 罰款
- 出發前 29 天或更短時間：全額旅遊費用的 100% 罰款

錯過或選擇不參加旅行的任何部分都不會獲得部分積分。

如有不可抗力災害，取消政策將依具體情況處理。

團體機票不可退款、不可更改。

Group Policies:

Group Price listed on Sonic Travel and Tour Website is only applicable when the group size reaches 10 people.

For Group size between of 2-6 people, the tour will operate by 1 person driver/guide.

For Groups size of 2 people, meals are not included in the tour fare.

Deposit Requirements:

For Tour Fares of \$3000.00 or higher, a \$1000.00 deposit will be collected.

For Tour Fares less than \$3000.00, a \$500.00 deposit will be collected.

Bonus Credit \$100: Credit for Final Payment made more than 75 days before departure.

(Limit 1 Per Person Per Tour)

Referral Credit \$50: If an existing Sonic Travel and Tour client refers someone to join the same tour, and the referred person is a new Sonic Travel and Tour client, both the referring person and referred person's booking will get a \$50 credit. (Limit 1 Per Person Per Tour)

Sonic Travel and Tour will make the final determination for eligibility of the Bonus Credit or Referral

Credit.

In case of any disputes, the English language version of this Cancellation policy will prevail.

團體政策：

Sonic Travel and Tour 網站上列出的團體價格僅適用於團體人數達到 10 人的情況。

對於 2 至 6 人之間的團體規模，旅遊將由 1 人司機/導遊負責。

對於 2 人的團體，餐費不包含在旅遊費用中。

存款要求：

對於 3000.00 美元或以上的旅遊票價，將收取 1000.00 美元押金。

對於低於 3000.00 美元的旅遊票價，將收取 500.00 美元押金。

獎勵積分 100 美元：出發前 75 天以上支付的最終付款可獲得積分。（每人限購 1 人）

推薦積分 50 美元：如果現有 Sonic Travel and Tour 客戶推薦某人參加同一旅遊，

並且被推薦人是新的 Sonic Travel and Tour 客戶，則推薦人和被推薦人的預訂都將獲得50美元的積分。

（每人限購 1 人）

Sonic Travel and Tour 將最終確定獎勵積分或建議積分的資格。

如有任何爭議，以本取消政策的英文版本為準。

Tel: 888-266-8988

Fax: 323-266-3380

www.Sonictour.com

9662 Las Tunas Dr, Temple City, CA 91780



LAX CST#2057190-40